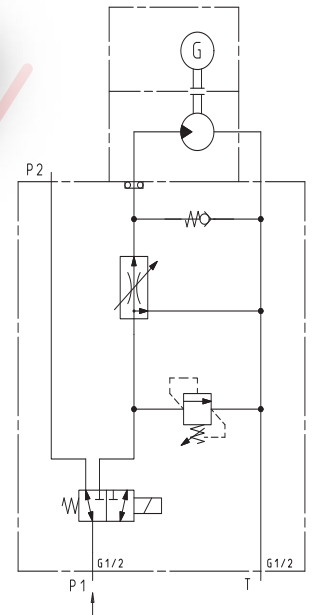
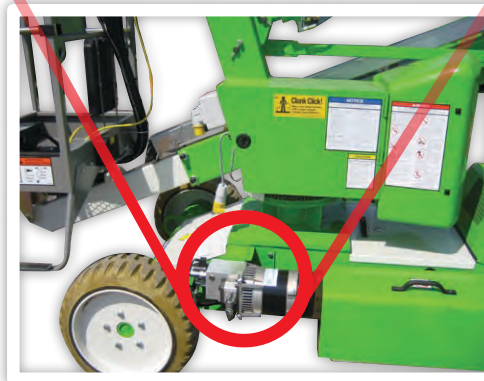
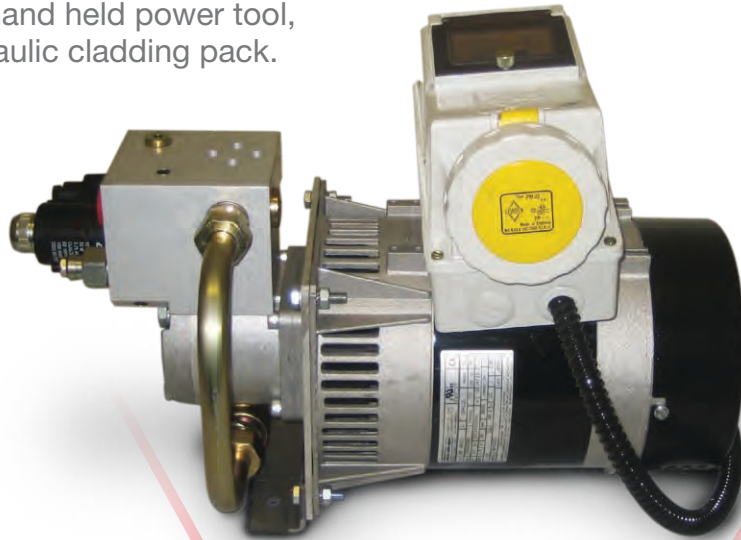




The AJC Hydraulic Generator

Units are now widely in use throughout the UK and Europe providing safe, efficient on board power for the majority of engine driven access machinery. It will provide you with enough power for any hand held power tool, lighting or hydraulic cladding pack.



This product is extremely popular within the equipment rental market and will bring you the following benefits:

- ✓ No need for a stand-alone diesel generator, therefore no security issues
- ✓ No additional fuel costs
- ✓ Considerable reduction in service and maintenance costs
- ✓ No noise emissions
- ✓ Quick & Easy installation
- ✓ Earth leakage circuit breaker protection
- ✓ Choice of either 110/240V, 50/60 hz or three phase models



The AJC Hydraulic Generator

Hydraulic Generator Range

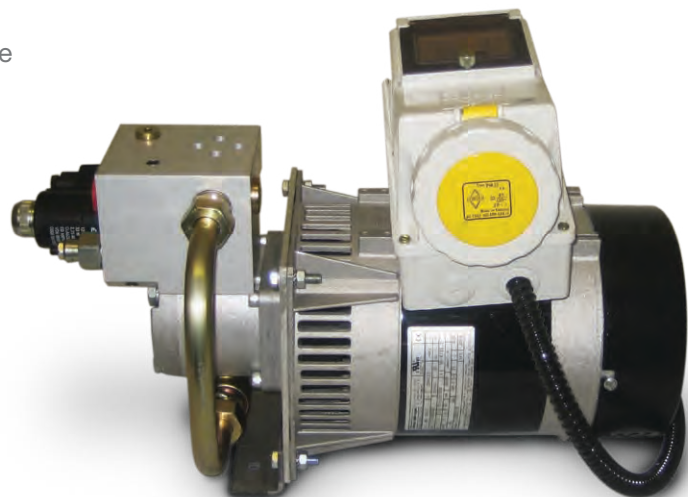
Model	KVa Rating voltage	Minimum Flow L/ min	Hydraulic Requirements Pressure Max Bar	Continuous flow required
AJC-HG-2	2	24	210	21
AJC-HG-3.5-9	3.5	24	210	21
AJC-HG-6-12	6	31	210	28

	AJC-HG-130AC-16	AJC-HG-200AC-16	AJC-HG200DC-16
Welding Current	130A	200A	200A
Welding Electrode	3,25mm	5mm	5mm
Duty Cycle	60%	60%	60%
Striking Volts	60v	60v	70v
Welding Voltage	22-32Va		
Auxiliary Power	3.5kVa	6kVa	6kVa
Hydraulic Flow L/min	24	31	31
Hydraulic Pressure bar	210	210	210

All units require a constant hydraulic flow rate, to calculate the power available the calculation is flow rate in L/pm x pressure in bar divided by 600, so if we have 21 L/pm x 210 bar = 4410 divided by 600 = 7.35 kW potential power, which with an overall efficiency of approx. 75%, means that this unit can produce approximately 5.5kW, if the pressure available is less then the power achievable will be reduced accordingly.

All units are supplied as standard with pressure compensated flow control valve, directional valve and pressure relief valve. Units can be supplied with either 12v or 24v DC coils. Output voltages available are 110vCTE, 220v, 110/240v or 400v three phase. Both 50 and 60hz units are available.

Units can be manufactured to suit individual customer requirements, please always specify flow rates available and maximum pressure in bar, in order that we may offer the right unit for your application. Available with Kit and Installation service.



Tel **01582 486663**

Email **sales@ajcpowersolutions.co.uk**

Visit our factory & showroom (5 mins from J11 M1)
Unit 10, Cosgrove Way, Luton, Bedfordshire LU11XL